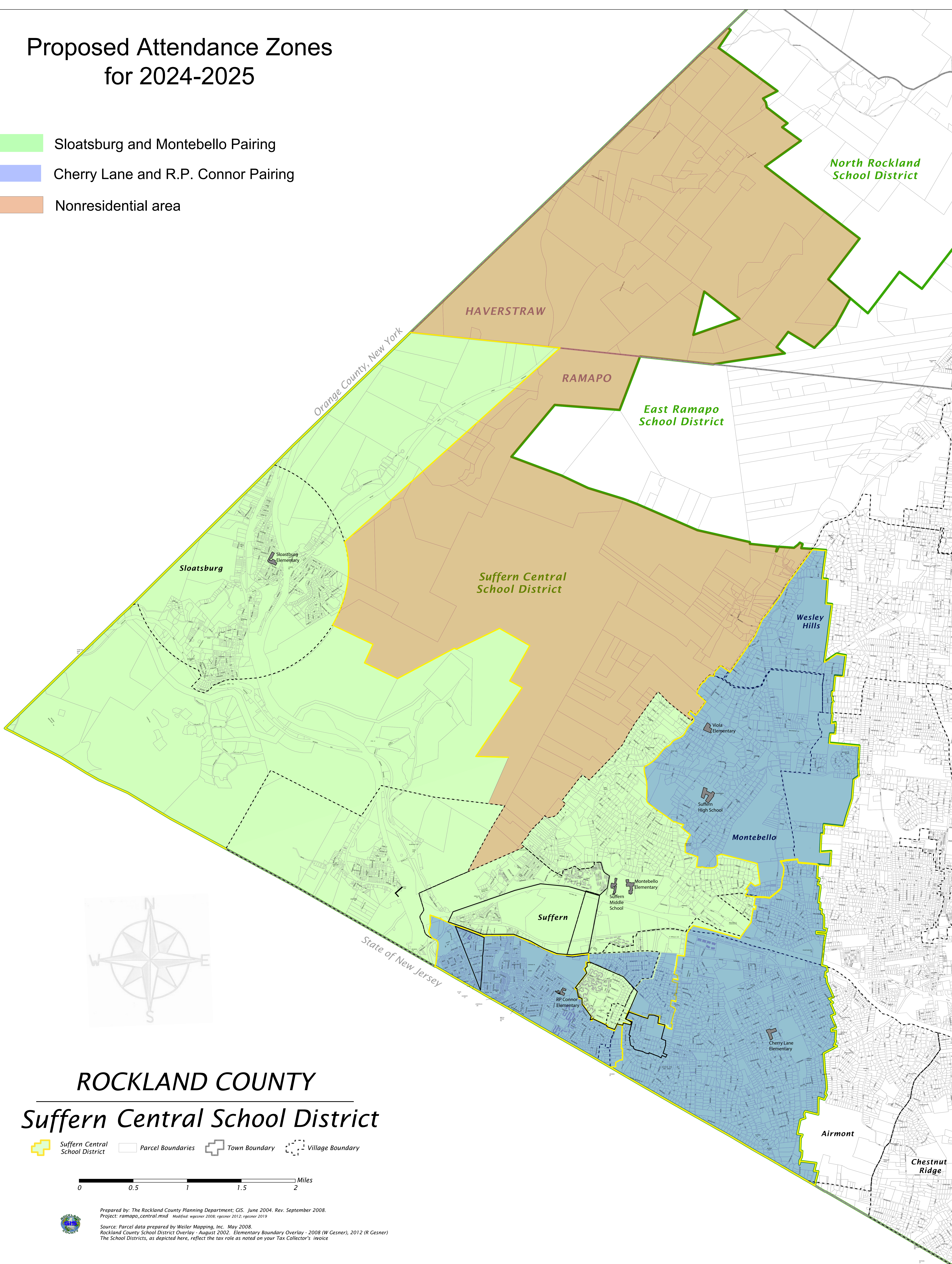


# Proposed Attendance Zones for 2024-2025

- Sloatsburg and Montebello Pairing
- Cherry Lane and R.P. Connor Pairing
- Nonresidential area



## ROCKLAND COUNTY Suffern Central School District

- Suffern Central School District
- Parcel Boundaries
- Town Boundary
- Village Boundary



Prepared by: The Rockland County Planning Department; GIS, June 2004, Rev. September 2008.  
Project: ramapo\_central.mxd Modified: wgesner 2008; rgesner 2012; rgesner 2019

Source: Parcel data prepared by Weiler Mapping, Inc. May 2008.  
Rockland County School District Overlay - August 2002. Elementary Boundary Overlay - 2008 (W Gesner), 2012 (R Gesner)  
The School Districts, as depicted here, reflect the tax role as noted on your Tax Collector's Invoice